



USB DECT VOIP Adaptor

Model No.: H-002 User Manual



To avoid malfunctions or danger occurred from irregular usage , please read this Manual carefully before using the product.

Contents

Introduction	1
Safety Precautions	2
Installation Procedures.....	3
Basic Functions	6
Basic Operation of H-002	6
Dialing/Receiving Phone calls	7
Additional Functions	8
Registering handsets to H-002	8
Clear All handsets on H-002.....	11
Clear Selected handsets on H-002.....	12
Paging handset.....	13
Loop-back Testing	14
Power Source Precautions.....	15
Maintenance.....	15
Product Specifications.....	16
Safety Precautions and Emergency.....	17

Product Introduction

1. Handset is able to display SKYPE account name.
2. Handset supports caller ID of incoming calls from SKYPE.
3. USB 1.1 and upward compatible.
4. Up to 4 DECT handsets.
5. Easy installation.
6. Lightweight and portable.
7. Using DECT standards and communicate with mobility without interference.
8. Portable to max. of 6 different PCs.

Safety Precautions

1. Please read the product manual before using the product.
2. Please take note of symbols printed on the product.
3. Install the DECT phone charging unit away from fire hazard place.
4. Do not do installation during thunderstorm weather.
5. If H-002 USB Dongle is faulty, please contact your local service centre for repair.
6. Do not use H-002 USB Dongle handset near the sensitive medical equipment.
7. Install the phone set in a safe place.

Installation Procedures

H-002 application installation

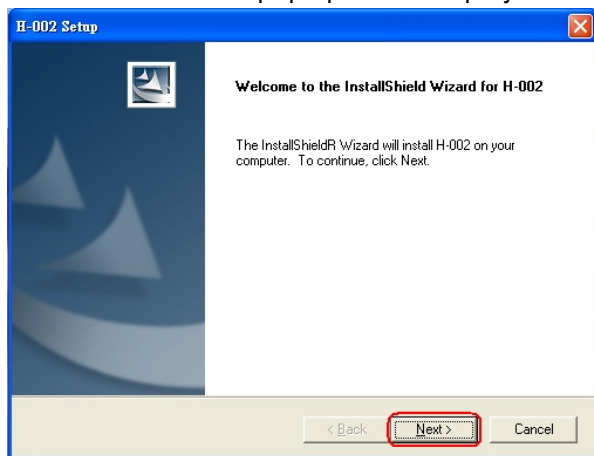
Step 1. Install the accompanying self executable file into the computer following the procedures below:

NOTE: Need to initiate the SKYPE program first, if the program is not installed, please install the program prior to the set up proceedings: (before following the procedure below)

Step 2. Insert the CD into the CD-ROM drive, run Setup.exe to begin installation



A window as above will pop up on the display:



Click 'Next' and continue the installation

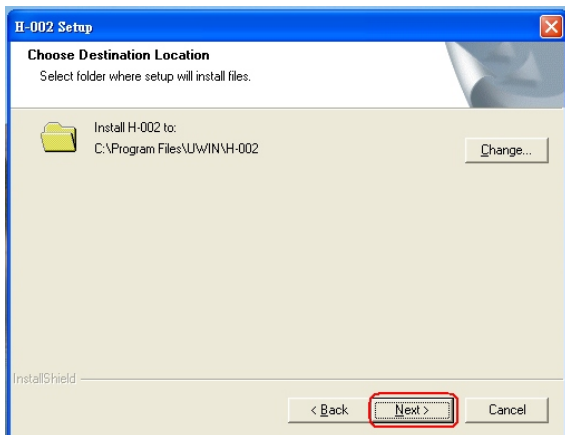
Please read page 9 of the product manual on how to register handsets to H-002.

This procedure can be done on maximum of 6 different PCs, and the product may arbitrarily be ported among these computers.

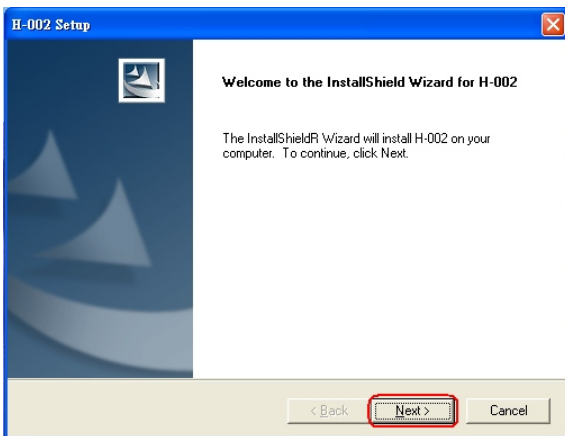
SKYPE is a registered trademark of SKYPE Limited

Installation Procedures

Step 3. A new window will appear asking for the path for the files to be installed. To leave the path unchanged, click 'Next', or click 'Change' to change to the desired path.



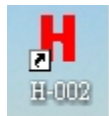
When this window appears, click 'Finish' to complete installation.



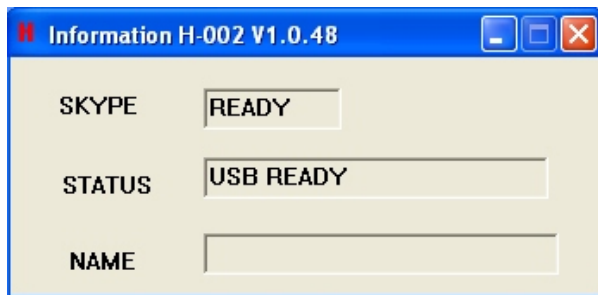
Assembly Procedures

H-002 Operation

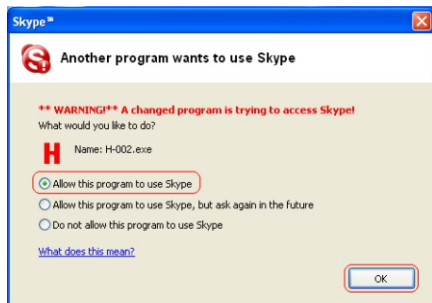
Step 1. Upon completion of installation, the H-002 shortcut will be created on the computer's desktop



Click on the application and a window resembling this will appear



Upon successful installation, a window will appear from the SKYPE software. Please select 'Use this Program for SKYPE' followed by '**Confirm**' to close the window

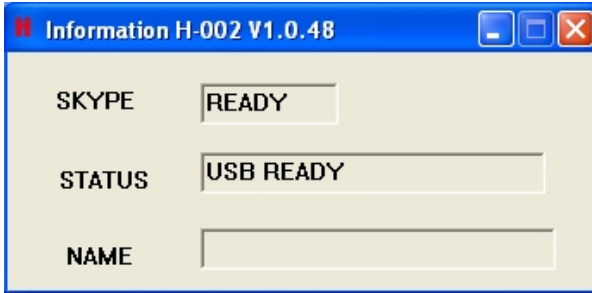


Please refer to page 9 of the user manual on registering handsets to H-002.

Basic Functions

Basic operations of H-002

1. When the following window is displayed, the installation is complete and H-002 may now be used.



2. After successful registration of handsets, the operational Hot Keys are as follows

Hot Keys:

'#': SKYPE postfix for Skype end-of-dialing

'1': Scrolls contact list upwards

'*': Scrolls contact list downwards

Other Hot Keys and their functions are displayed below:

	No.2	No.3	No.4	No.5	No.6	No.7	No.8	No.9
Press once	A	D	G	J	M	P	T	W
Press twice	B	E	H	K	N	Q	U	X
Press thrice	C	F	I	L	O	R	V	Y
Press four times						S		Z

Basic Functions

Dialing/Receiving phone calls

1. Outgoing call (SKYPE to SKYPE):


When SKYPE is displayed while pressing on the hook-off button, scroll up or down to the contact, followed by pressing the '#' button to start the call. You may even to use other number keys to short-cut the search for the contact. An example is given below.



VoIP USB

Example: If you have Ray and Roger in your SKYPE contact list and you wish to call Roger, press '7' three times and it will bring the contact list to names starting with the alphabet 'R'. In this example the screen on the handset will display 'Ray'. Pressing the '*' button will select the next name in line and when 'Roger' is selected, press '#' to make a call.

2. Outgoing call (SkypeOut):

When hook-off button  is pressed, SKYPE will be displayed on the phone set screen. Directly dial (00 + Country Code + Phone Number) and then depress '#' and contact will be made.



VoIP USB

3. Incoming Calls

Press the hook-off button when phone ring to answer the call .



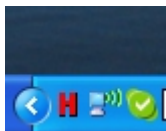
ECHO_Chinese

SKYPE is a registered trademark of SKYPE LIMITED

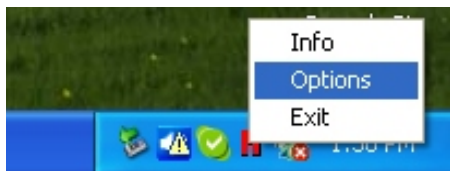
Additional Functions

Registering DECT handsets to H-002

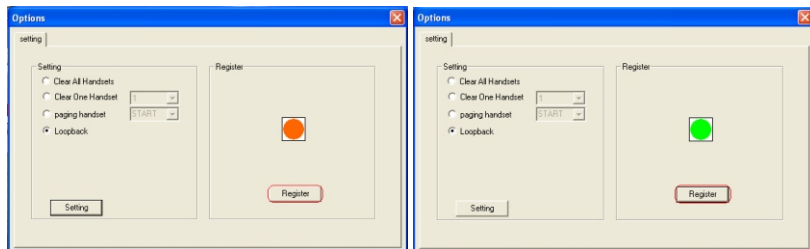
Move the mouse pointer to the extreme Right corner of the Taskbar and locate the H-002 icon. Right click and the menu appears . Choose '**Options**' and registration process begins.



Click on the H-002 icon (Using the Right click)



Selecting '**Options**' on the menu (from the Right click menu), a window (resembling this) will appear. Upon clicking the '**Register**' button, the indicator will change from Orange to Green. Subsequently, execute the procedures for handset registration.



NOTE: Register the handset on H-002 as Base 2, if a regular DECT Base is being used

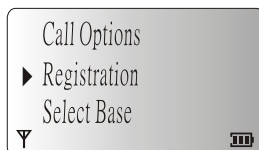
Additional Functions

Using Panasonic DECT phone model KX-TCD216 as an example, the registration process is as follows

1. Press the 'OK' button, using the arrows on the phone set, select 'Handset Setup'.



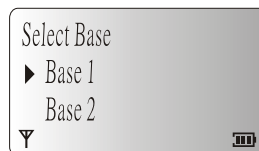
2. Press the 'OK' button, using the arrows on the phone set, select 'Registration'.



3. Press the 'OK' button, using the arrows on the phone set, select 'Register H.set'.



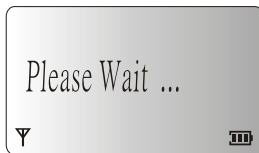
4. Press the 'OK' button, using the arrows on the phone set, select 'Base 1'. C



NOTE: Register the handset on H-002 as Base 2, if a regular DECT Base is being used

Additional Functions

5. The screen will display a message 'Please Wait...'



Please input the Base PIN for the main phone set 'Enter Base PIN'.



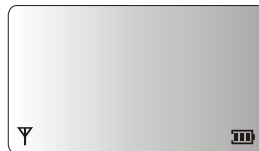
6. Input the Base PIN (default PIN: 1590) and the screen will display '****'. Press 'OK' to confirm the code.



7. The screen will then display a message 'Please Wait...'



When the screen returns to the idle mode as shown below, the registration process is complete. Make sure the antenna icon on the handset is not blinking. Otherwise, there is a registration failure. N



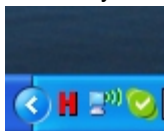
C

NOTE: Register the handset on H-002 as Base 2, if a regular DECT Base is being used

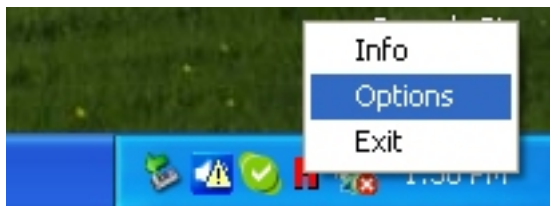
Additional Functions

Clear all handset registration with H-002

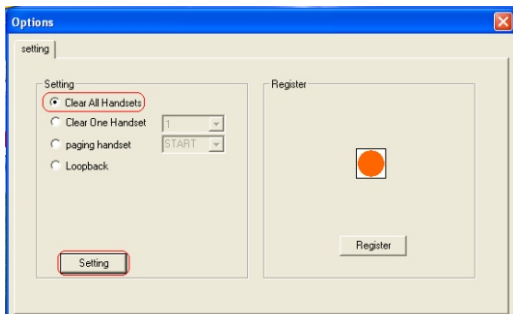
Move the mouse pointer to the extreme Right corner of the Taskbar and locate the H-002 icon. One click on the right end of the mouse and menu appears. (Right clicking will bring out the menu.). Choose '**Options**' and all Phone set registration with the H-002 may be deleted.



Click on the H-002 icon (Using the Right click)



Selecting '**Options**' on the menu , a window resembling this will appear. Upon clicking the '**Setting**' button, all registered handsets are deleted.

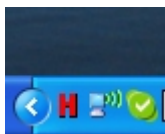


Note: The handset will be unusable after deregistration and must be registered again for use. Please refer to page 9 of the manual for handset registration process.

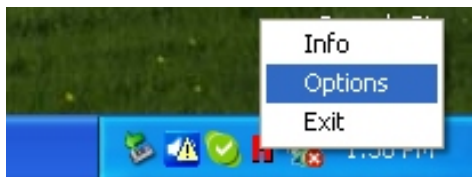
Additional Functions

Clear one handset registration on H-002

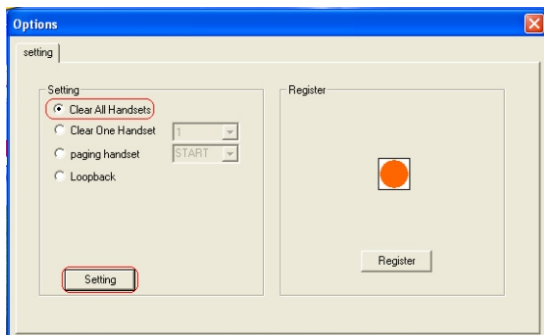
Move the mouse pointer to the extreme Right corner of the Taskbar and locate the H-002 icon. Click on the icon and menu appears. (Right clicking will bring out the menu.) Choose '**Options**' and Selected handset registration with the H-002 may be deleted.



Click on the H-002 icon (Using the Right click)



Selecting '**Options**' on the menu (from the Right click menu), a window resembling this will appear. Upon clicking the 'Setting' button; Selected registration is (may now be) deleted.

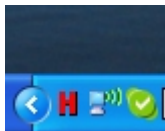


Note: The handset will be unusable after deregistration and must be registered again for use. Please refer to page 9 of the manual for handset registration process.

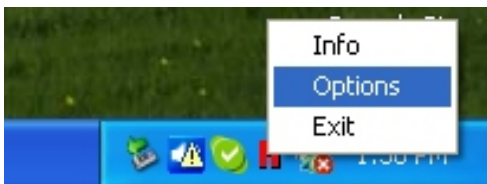
Additional Functions

Paging Handset

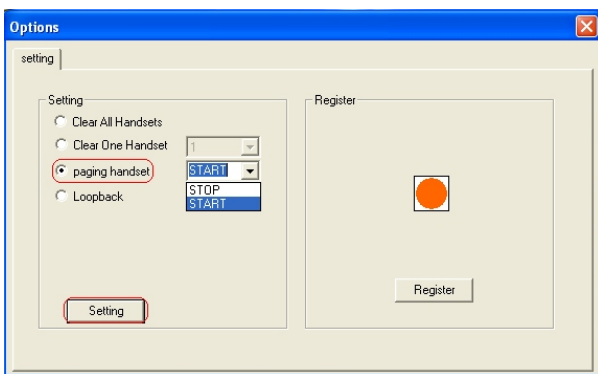
Move the mouse pointer to the extreme Right corner of the Taskbar and locate the H-002 icon. Right clicking will bring out the menu. Choose '**Options**' and handset paging will now be available.



Click on the H-002 icon (Using the Right click)



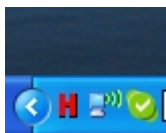
Select '**Options**' on the menu (from the Right click menu), a window resembling this will appear. From the Paging category drop list, select 'Start' and click on '**Setting**'. This will execute the paging function.



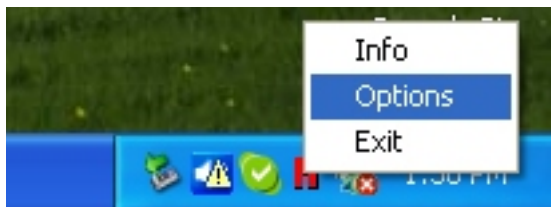
Additional Functions

Loop-back Testing

Move the mouse pointer to the extreme Right bottom corner of the Taskbar and locate the H-002 icon. On click and the menu appears (Right clicking will bring out the menu). Choose '**Options**' and Loop-back testing may now begin.

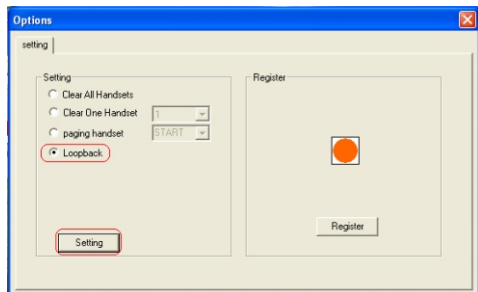


Click on the H-002 icon (Using the Right click)



Selecting '**Options**' on the menu (from the Right click menu), a window resembling this will appear. Upon clicking the '**Setting**' button, Loop-back testing may now begin.

The window below will appear when the set up of the link between H-002 and the computer is completed. (If a window appears showing a successful Phone set test result, it indicates that there is no problem in the link between the computer and the H-002).



FAQ

1.FAQ

- Q. My screen displays a window showing 'Unable to connect to USB ?
- A. Please wait for 1 minute. If there is still no connection, unplug and re-plug the equipment and restart the software.
- Q. The message VOIP USB does not appear after pressing the communicator button?
- A. End the previous call and restart. If VOIP_USB still does not appear, please register again. For detail information on registration , please refer to page 8 of the manual.

Power Source Precautions

1. This product is powered by the computer USB port

Maintenance

1. Use a mildly damp cloth for cleaning the product. Do not use detergent or any other cleaning chemical preparations to clean the product.
2. Avoid placing the main phone set or hand sets in dusty, wet, high temperature or shaky places, under strong sunlight or in areas where X-rays are present.

Product Specifications

DECT (Digital European Cordless Telephone)
with GAP (General Access Profile)

Channel Number	Channel 8
Modulation Method	GFSK
Operating Frequency	1880~1990 Mhz
Voice Codec	ADPCM (32kbps)
Data Transfer Speed	1152kbps
Operational Temperature Range	0 ~ +55 Degrees Celsius
* Range	Outdoors approx. 100m. Indoors approx. 20~50m.
Power Source	This product is powered by the computer via USB
Minimum Power Consumption	83 mA
Maximum Power Consumption	93 mA

* Range may differ due to different operating environments

Safety Precaution and Emergency:

If the product malfunctions, switch off the main power supply.
If the product is faulty and requires repairs, please contact our Service Centers. Our friendly staff will be pleased to be at your service.